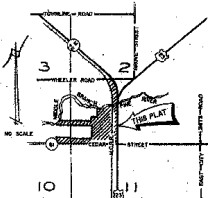
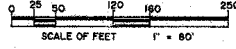


15

ASSESSOR'S PLAT OF CITY OF STANDISH NO. 5

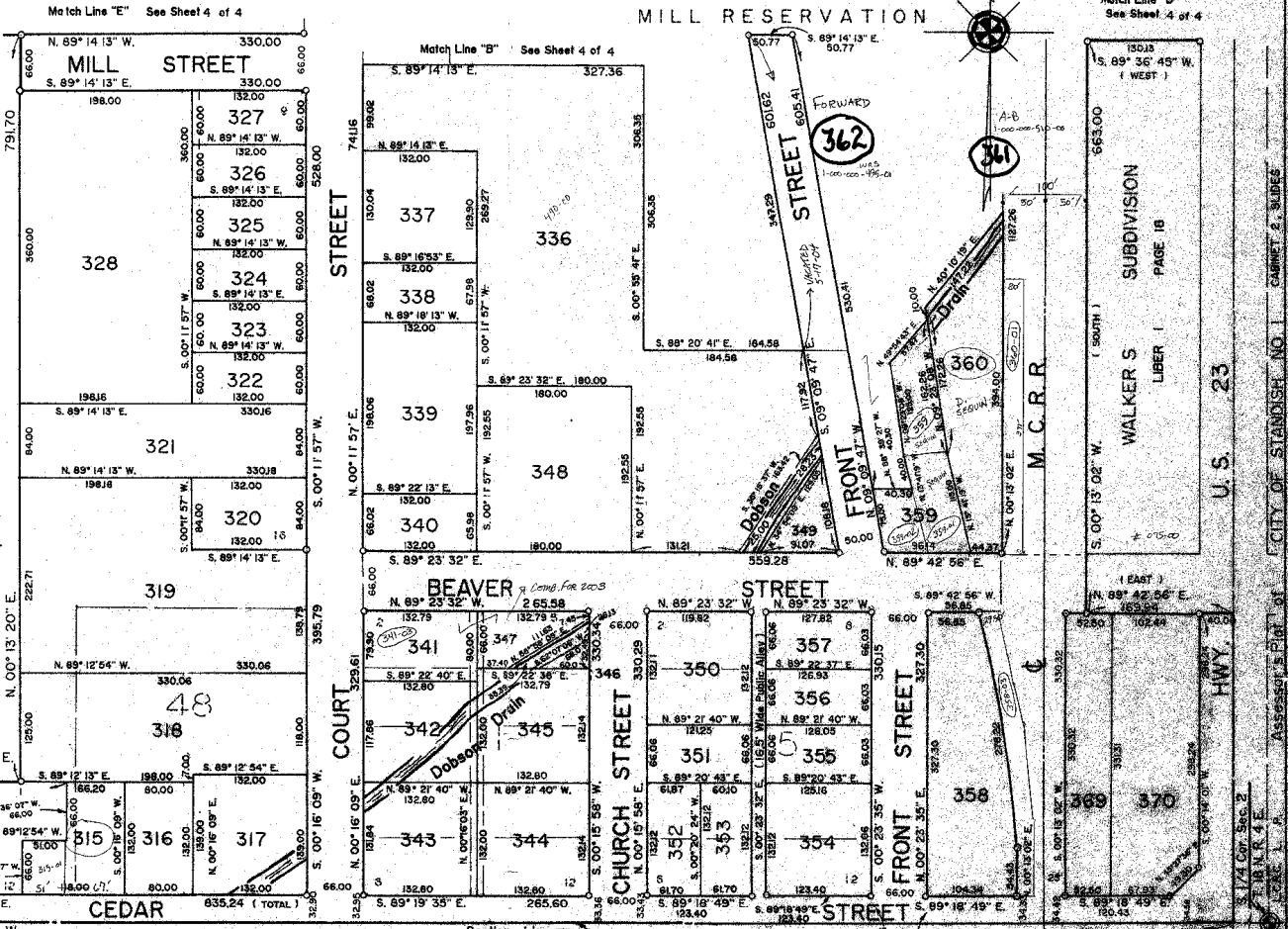
A SUBDIVISION OF PART OF THE S.W. 1/4 OF SECTION 2 AND PART OF THE S.E. 1/4 OF SECTION 3, T. 18 N. R. 4 E.,
LINCOLN TOWNSHIP, ARENAC COUNTY,
MICHIGAN



VICINITY MAP

- PLAT LEGEND**
1. ALL DIMENSIONS ARE IN FEET.
 2. CONCRETE MONUMENTS CONSISTING OF A SOLID STEEL ROD, 1/2 INCH IN DIAMETER AND 36 INCHES IN LENGTH AND COMPLETELY ENCASED IN CONCRETE 4 INCHES IN DIAMETER, HAVE BEEN PLACED AT ALL POINTS MARKED THIS "O".
 3. ALL CORNERS CONSISTING OF 2 INCH STEEL RODS, AT LEAST 4 INCHES IN LENGTH, DRILLED AND GROUTED WITH PORTLAND CEMENT, HAVE BEEN PLACED AT ALL POINTS MARKED THIS "X".
 4. LOT CORNERS HAVE BEEN MARKED WITH 1/2 INCH IN DIAMETER STEEL RODS, AT LEAST 18 INCHES IN LENGTH. LOT CORNERS MARKED WITH DRILL HOLES OR P.O.K., WALLS IN CONCRETE ARE MARKED THIS "X".
 5. BEARINGS WERE ESTABLISHED FROM PLANS ON FILE OF THE MICHIGAN DEPARTMENT OF TRANSPORTATION FOR HIGHWAY U.S. 23 (FILE NO. 6-R-2 SHEET 15).
 6. ALL CURVILINEAR DIMENSIONS ARE ARC LENGTHS.

Map of the VILLAGE OF GRANTON LIBER I, PAGES 92-93, BAY COUNTY RECORDS



Survey and Plat by:
Richard L. Miller
Richard L. Miller
Registered Land Surveyor
No. 16050



Point of Beginning
T. 18 N. R. 4 E.
L.C.R.C. L. P.

CITY OF STANDISH NO. 4 CABINET 2, SLIDES

U.S. 23

Match Line "B" See Sheet 4 of 4

MILL RESERVATION

Match Line "E" See Sheet 4 of 4

WALKER S. SUBDIVISION LIBER I PAGE 18

M.C.R.R.

HWY.